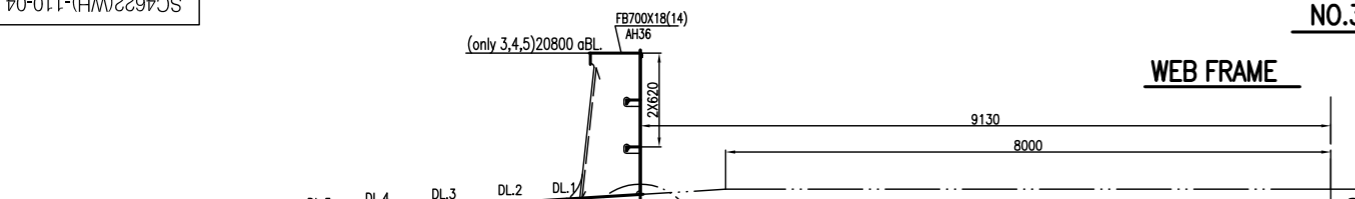


NO.3 CARGO HOLD



LONGITUDINAL SCANTLING

POSITION	SCANTLING	TYPE	SECTION
BOTTOM	BL.0	FB180X15(13)AH36	UPPER DECK
	BL.1	FB150X12(10)AH36	
	BL.3~15	HP260X10(7)AH36	
INNER BOTTOM	BL.17~19	HP260X12(9)AH36	WING
	IL.0,1	FB180X20(18)AH36	
	IL.3~15	HP320X13(10)AH36	
SIDE SHELL	SL.1~2	HP370X14(10)AH36	WING
	SL.3	HP320X12(8)AH36	
	SL.4~5	HP320X12(9)AH36	
HATCH COAMING	CL.1,2	HP180X10(6) AH36	HOPPER

- NOTED:
- TOPSIDE TANKS AND HOPPER SIDE TANKS ARE CONNECTED.
 - MATERIAL
 - MARKED 'AH', 'DH': HIGHER TENSILE STEEL GRADE 'A', 'D' OF MIN YIELD STRESS 315 N/mm².
 - MARKED STEEL 'AH36' 'DH36' 'EH36': HIGHER TENSILE STEEL GRADE 'A' 'D' 'E' OF MIN YIELD STRESS 355 N/mm².
 - NO MARKED STEEL: MILD STEEL GRADE 'A' OF MIN YIELD STRESS 235 N/mm².
 - F.P.: FULL PENETRATION WELDING
N.S.: NO SCALLOP

PRINCIPAL PARTICULARS

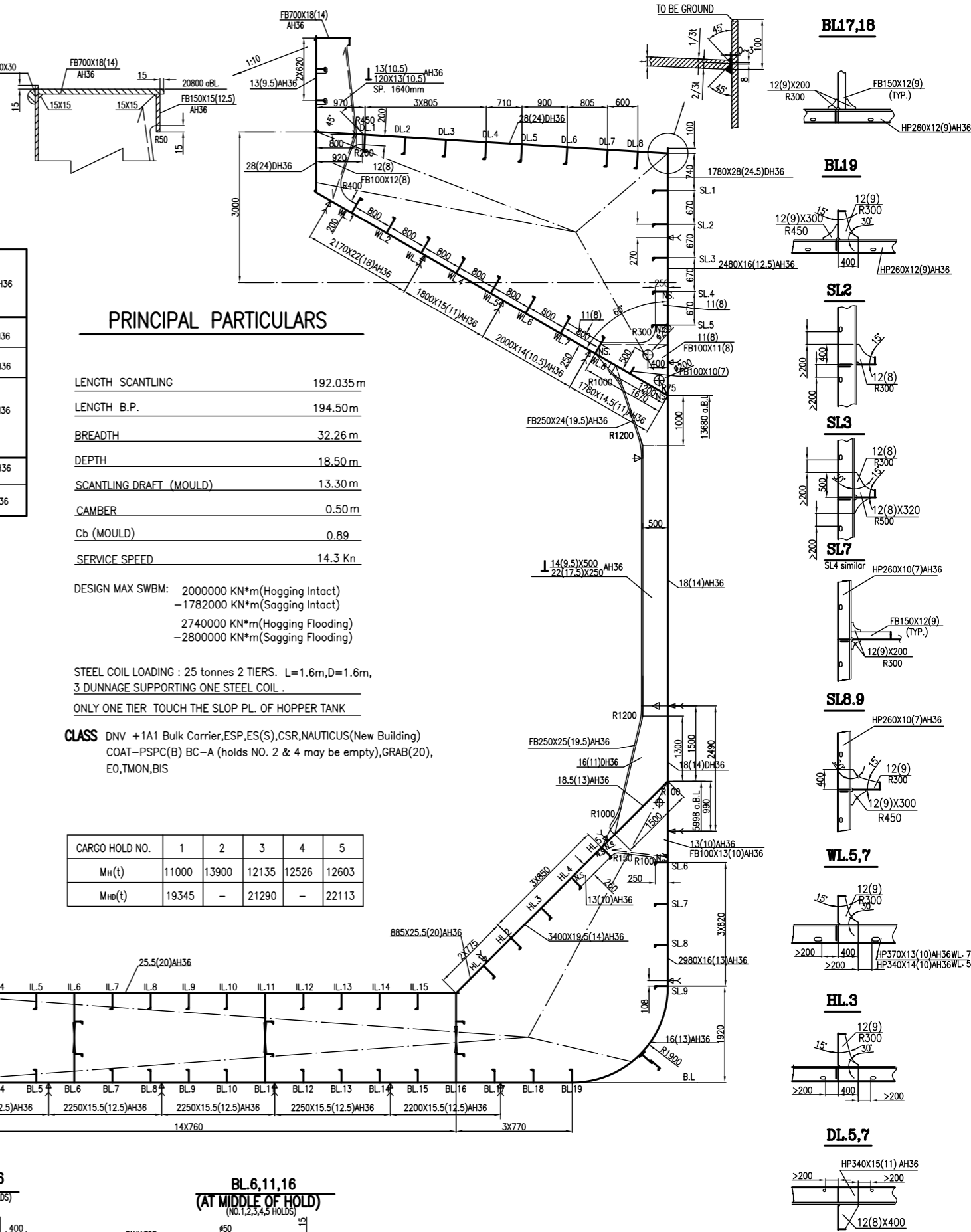
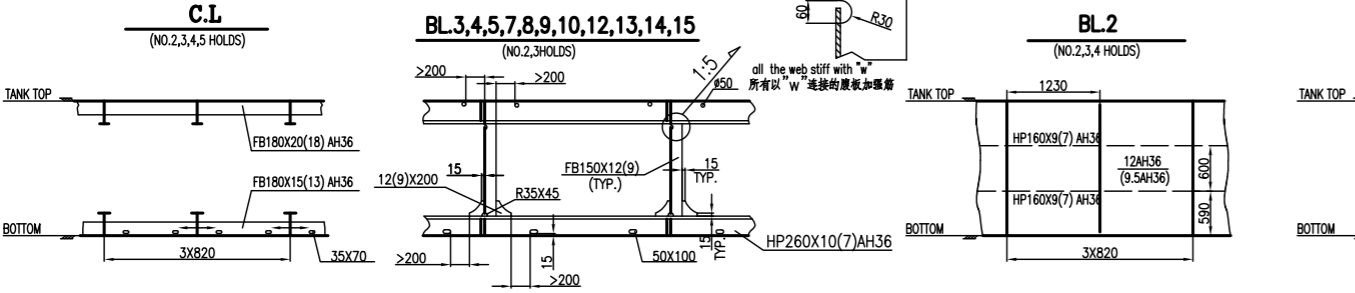
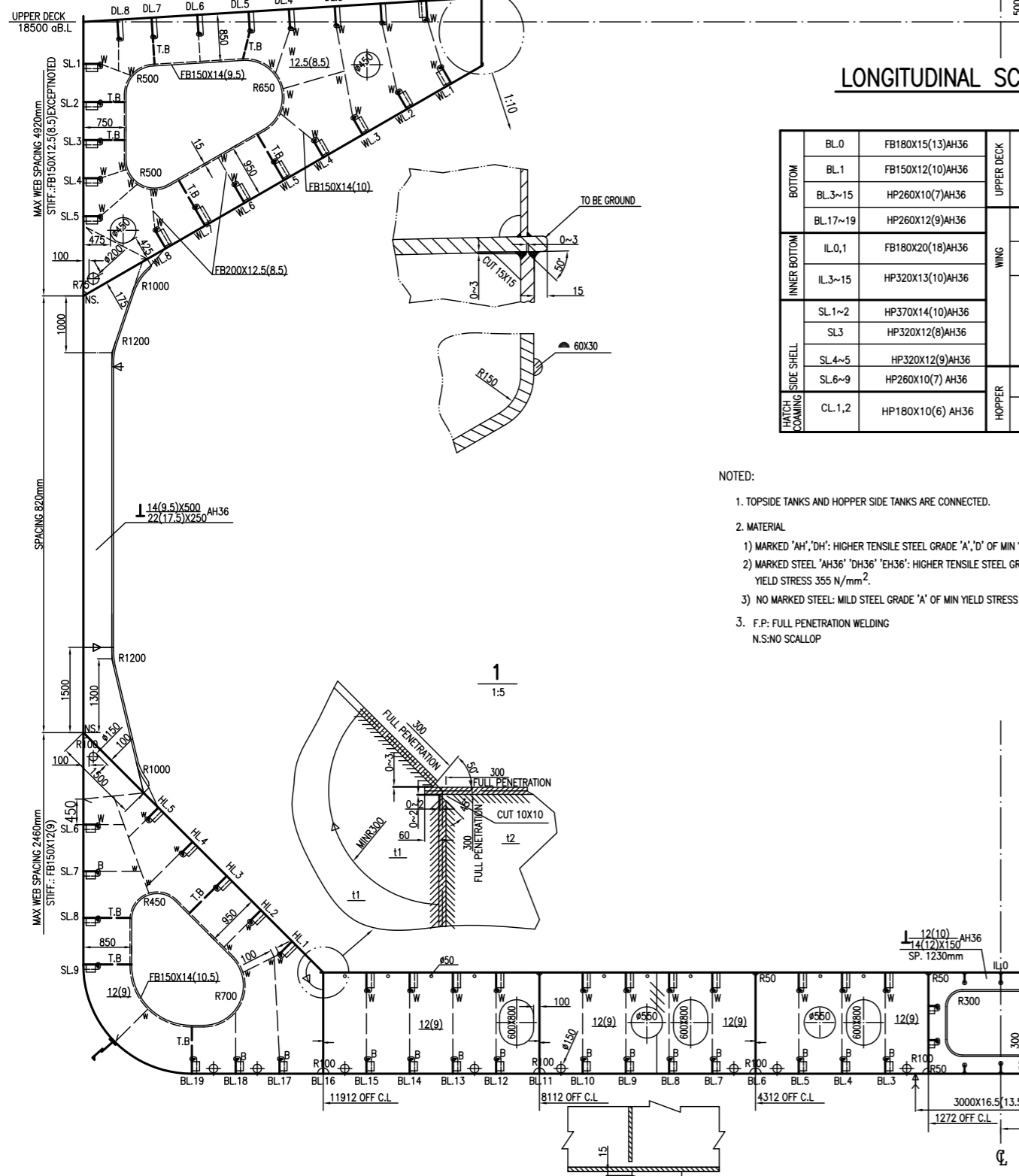
LENGTH SCANTLING	192.035 m
LENGTH B.P.	194.50 m
BREADTH	32.26 m
DEPTH	18.50 m
SCANTLING DRAFT (MOULD)	13.30 m
CAMBER	0.50 m
Cb (MOULD)	0.89
SERVICE SPEED	14.3 Kn

DESIGN MAX SWBM: 2000000 KN*m (Hogging Intact)
-1782000 KN*m (Sagging Intact)
2740000 KN*m (Hogging Flooding)
-2800000 KN*m (Sagging Flooding)

STEEL COIL LOADING: 25 tonnes 2 TIERS. L=1.6m, D=1.6m,
3 DUNNAGE SUPPORTING ONE STEEL COIL.
ONLY ONE TIER TOUCH THE SLOP PL. OF HOPPER TANK

CLASS DNV +1A1 Bulk Carrier, ESP, ES(S), CSR, NAUTICUS (New Building)
COAT-PSPC(B) BC-A (holds NO. 2 & 4 may be empty), GRAB(20),
E0, TMON, BIS

CARGO HOLD NO.	1	2	3	4	5
Mh(t)	11000	13900	12135	12526	12603
Mhd(t)	19345	-	21290	-	22113



DETAIL DESIGN	详细设计	63,600MT DWT PANAMAX BULKER WITH TRAINING PURPOSE	SC4622(WH)-110-04
CURRENT REVISION	A	MIDSHIP SECTION	HULL NO.: AVIC398/AVIC399
当前版本	A	横剖面图	
DESIGNED	李康	DOLPHIN 64	WEIGHT
CHECKED	严金勇		kg
VERIFIED	陈利平		1/3
APPROVED	陈利平		SCALE
DATE	2014.03.10		1:50
			TOT AREA
			1.0 m ²

SHANGHAI MERCHANT SHIP DESIGN & RESEARCH INSTITUTE
上海船舶研究设计院

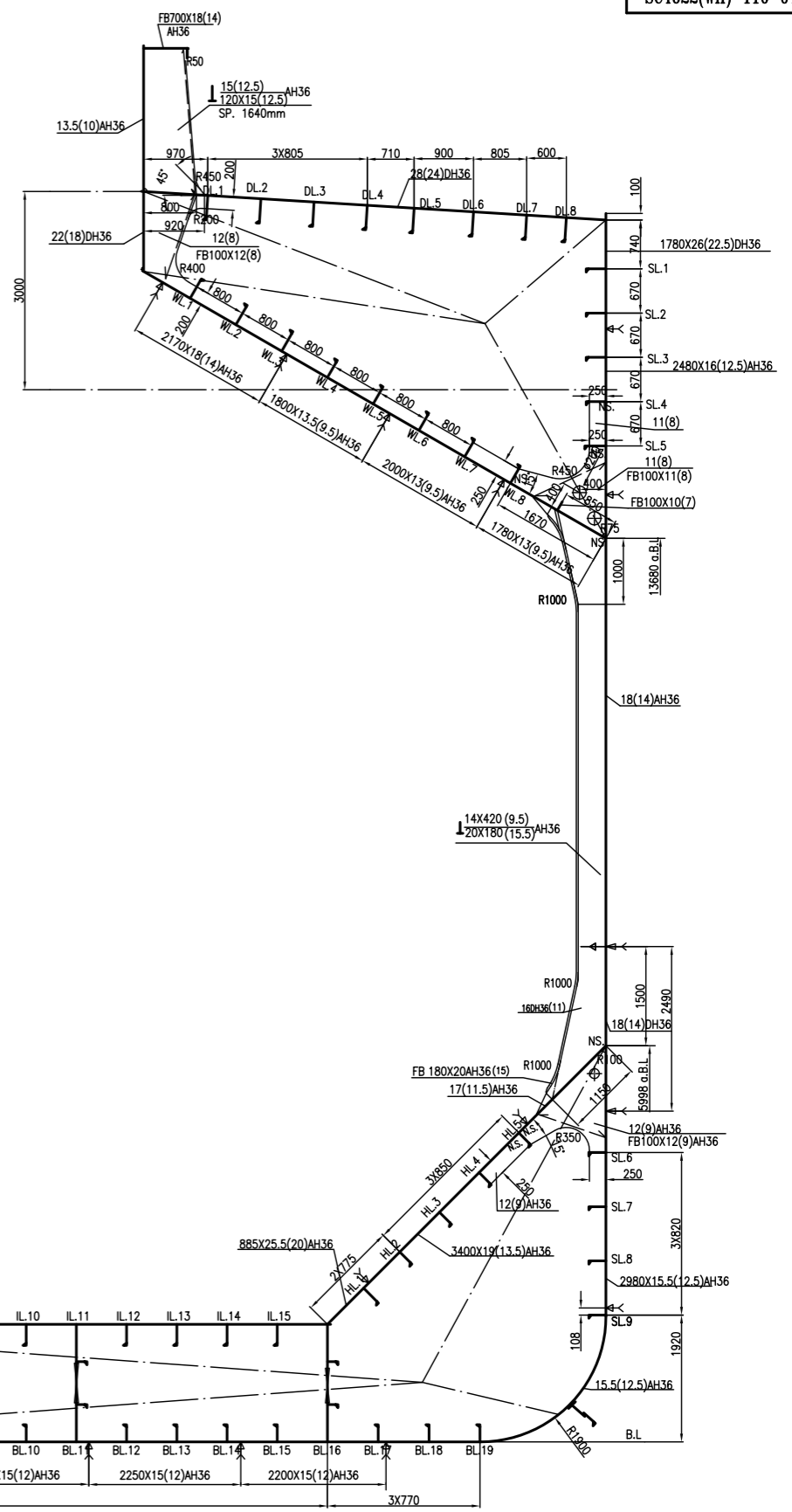
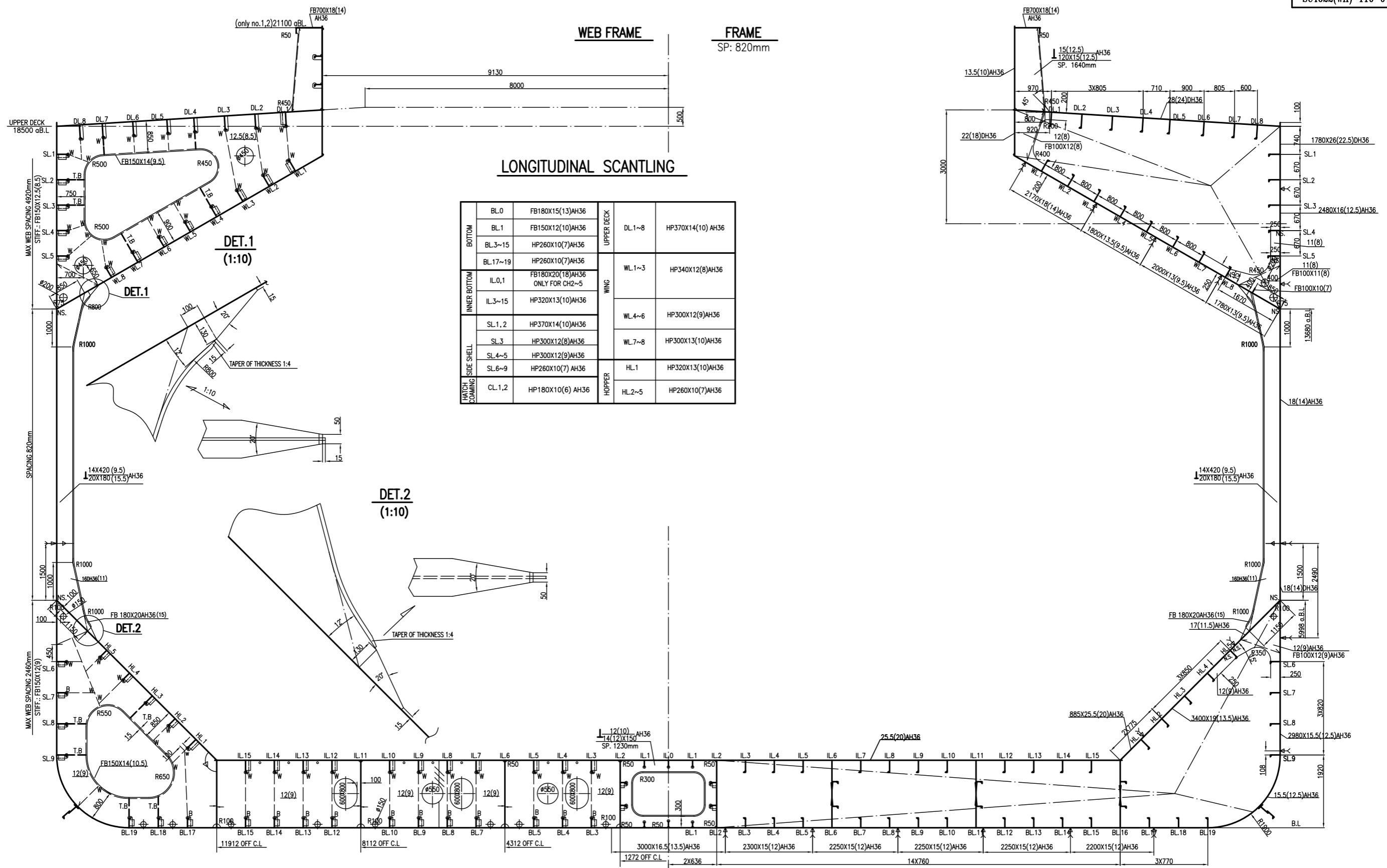
NO.2 CARGO HOLD

WEB FRAME

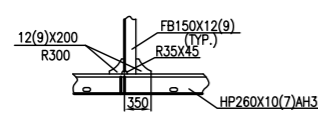
FRAME
SP: 820mm

LONGITUDINAL SCANTLING

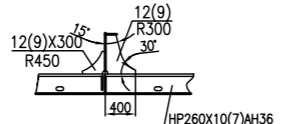
BOTTOM	BL.0	FB180X15(13)AH36	UPPER DECK	DL.1~8	HP370X14(10) AH36	
	BL.1	FB150X12(10)AH36		WING	WL.1~3	HP340X12(8)AH36
	BL.3~15	HP260X10(7)AH36			WL.4~6	HP300X12(9)AH36
INNER BOTTOM	BL.17~19	HP260X10(7)AH36	HOPPER	HL.1	HP320X13(10)AH36	
	IL.0,1	FB180X20(18)AH36 ONLY FOR CH2~5		HL.2~5	HP260X10(7)AH36	
SIDE SHELL	IL.3~15	HP320X13(10)AH36	MATCH COMING	CL.1,2	HP180X10(6) AH36	
	SL.1,2	HP370X14(10)AH36				
	SL.3	HP300X12(8)AH36				
	SL.4~5	HP300X12(9)AH36				
MATCH COMING	SL.6~9	HP260X10(7) AH36				



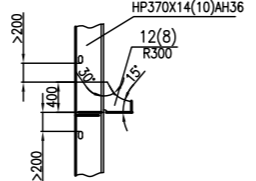
BL17



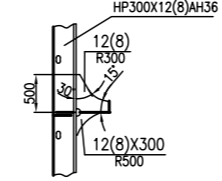
BL16,19



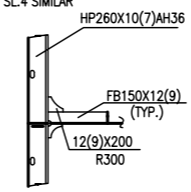
SL2



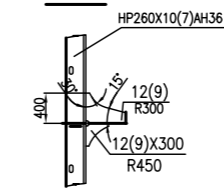
SL3



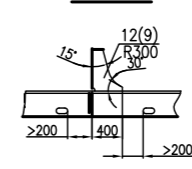
SL7



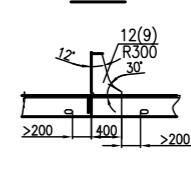
SL8,9



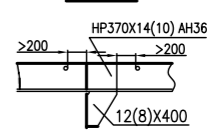
WL.4,7



HL.3



DL.5,7



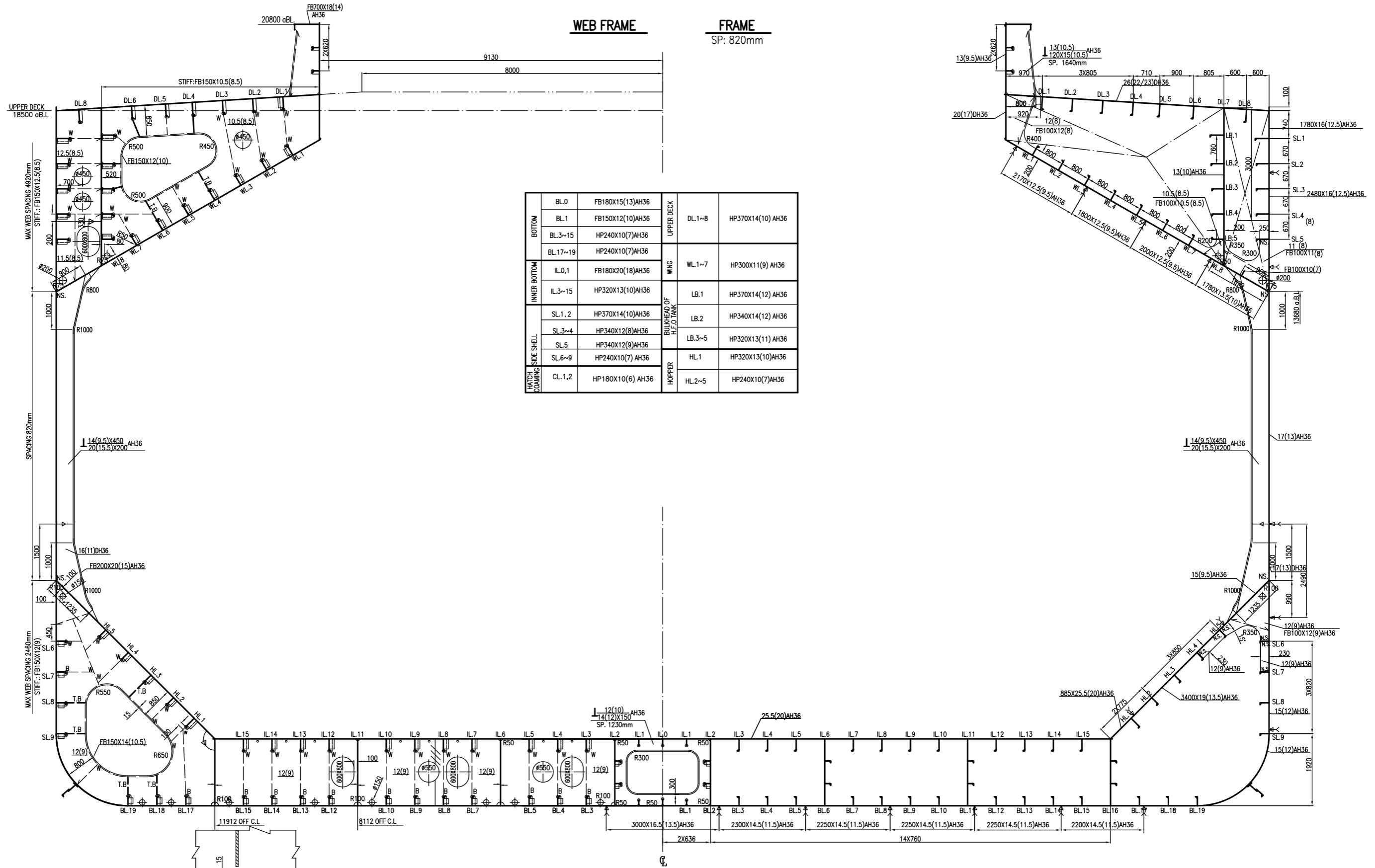
日底图号
底图号

NO.4 CARGO HOLD

WEB FRAME

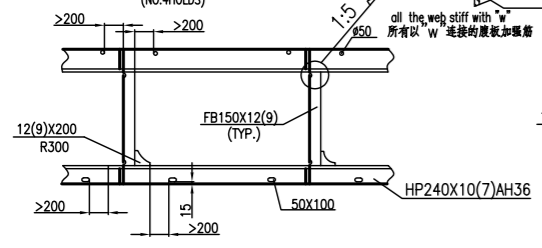
FRAME

SP: 820mm

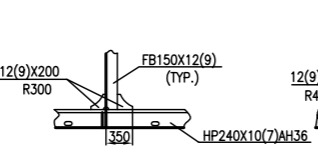


BOTTOM	BL.0	FB180X15(13)AH36	UPPER DECK	DL.1~8	HP370X14(10) AH36
	BL.1	FB150X12(10)AH36			
	BL.3~15	HP240X10(7)AH36			
INNER BOTTOM	BL.17~19	HP240X10(7)AH36	WING	WL.1~7	HP300X11(9) AH36
	IL.0,1	FB180X20(18)AH36			
SIDE SHELL	IL.3~15	HP320X13(10)AH36	BULKHEAD OF H.F.O TANK	LB.1	HP370X14(12) AH36
	SL.1, 2	HP370X14(10)AH36			
	SL.3~4	HP340X12(8)AH36			
	SL.5	HP340X12(9)AH36			
	SL.6~9	HP240X10(7) AH36			
HATCH COMING	CL.1,2	HP180X10(6) AH36	HOPPER	HL.1	HP320X13(10)AH36
				HL.2~5	HP240X10(7)AH36

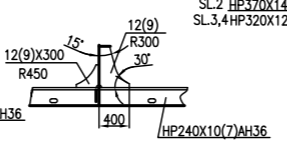
BL.3,4,5,7,8,9,10,12,13,14,15 (NO.4HOLDS)



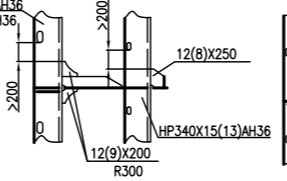
BL17



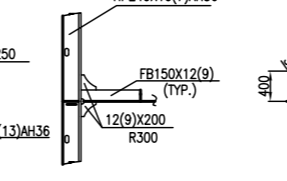
BL18,19



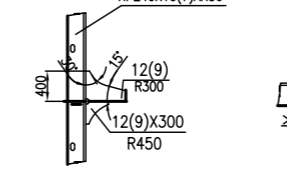
SL2



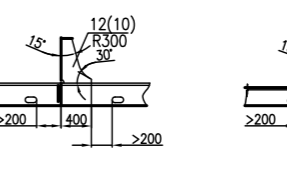
SL7



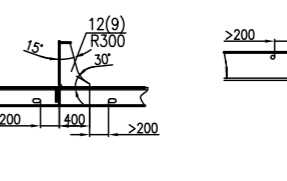
SL8,9



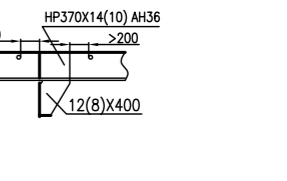
WL.4,6



HL.3



DL.4,6



图底图号
底图号