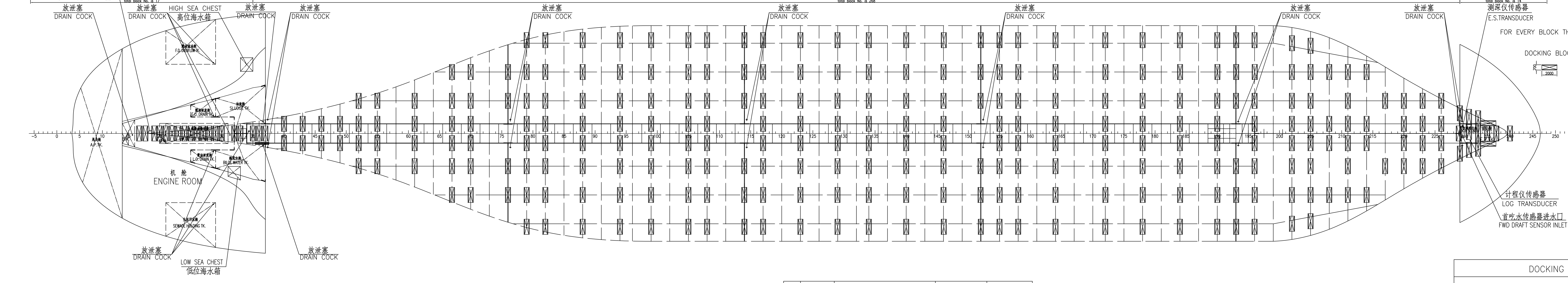
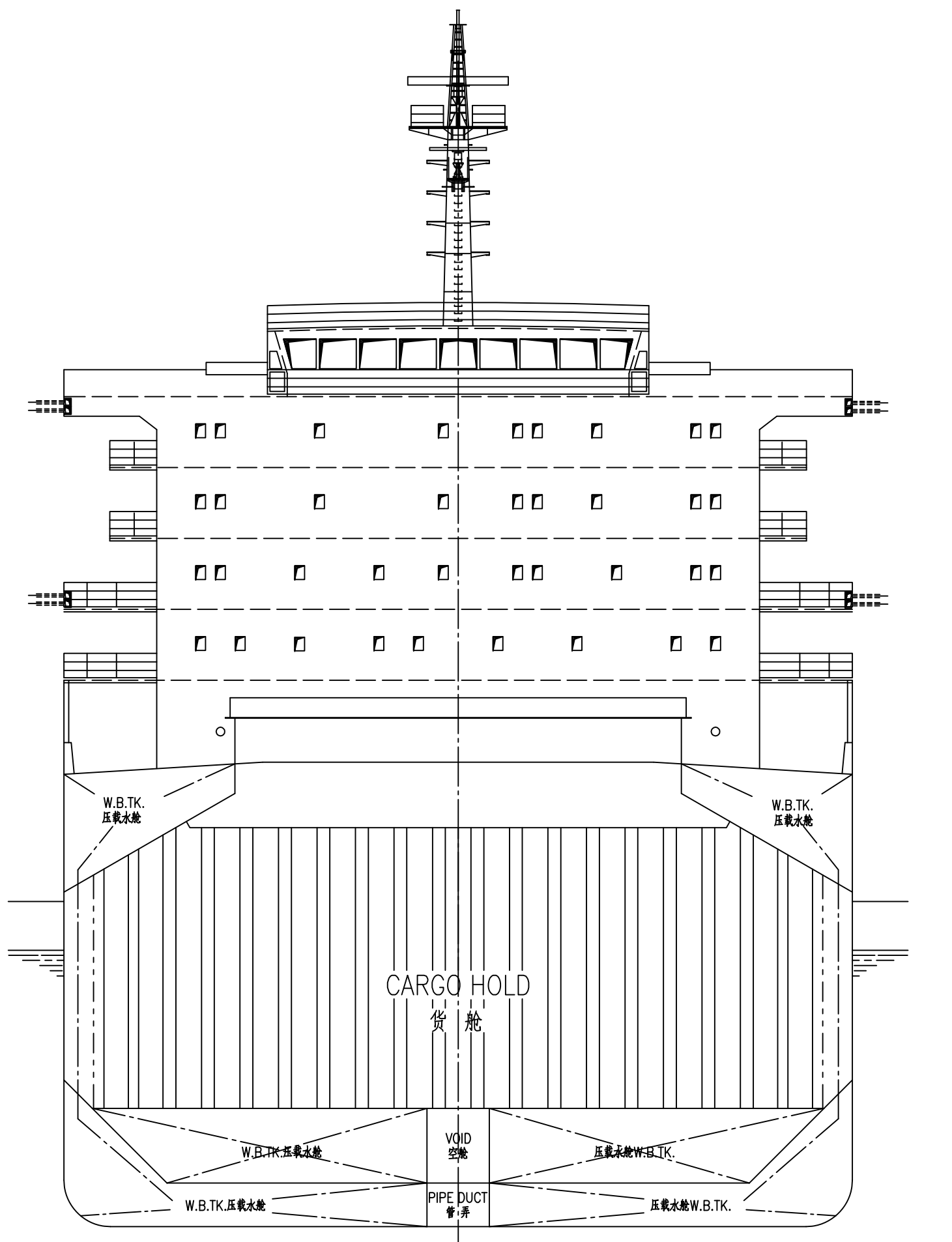
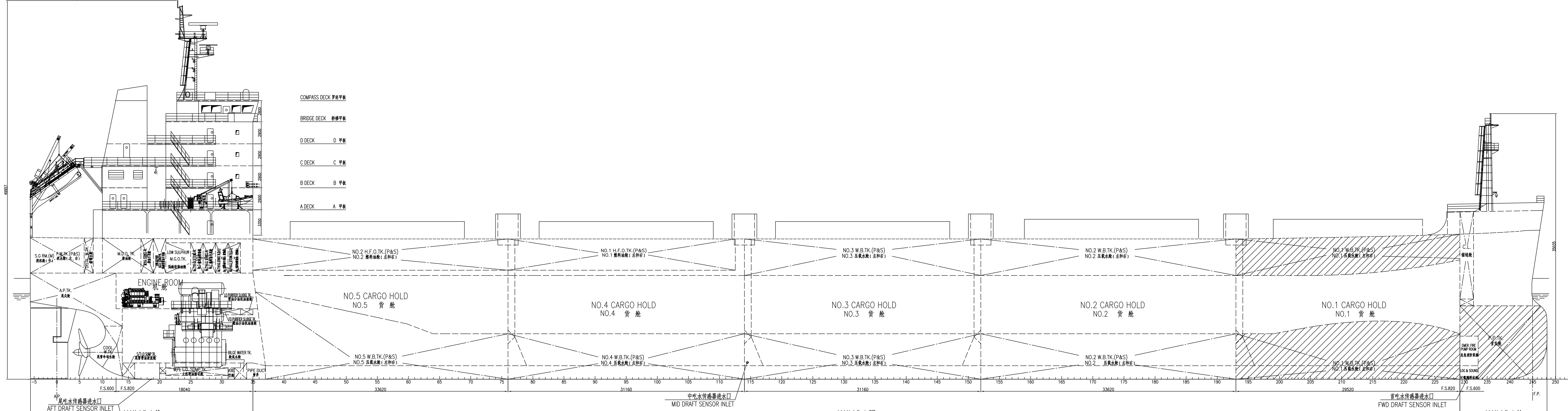


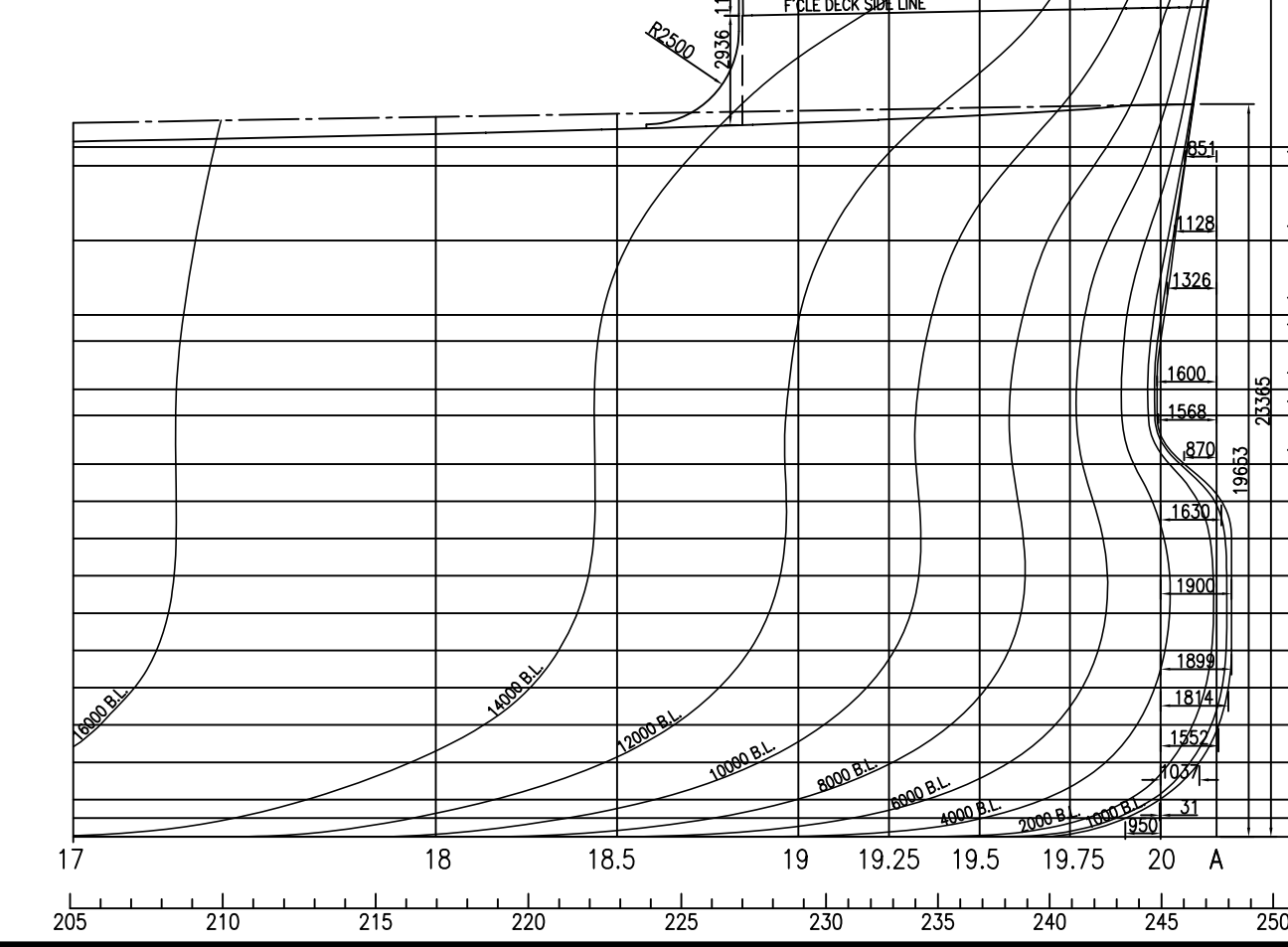
主要尺度及数据
PRINCIPAL DIMENSIONS

总长 LENGTH O.A.	199.813 m
垂线间长 LENGTH B.P.	194.50 m
型宽 BREADTH MLD.	32.26 m
型深 DEPTH MLD.	18.50 m
设计吃水 DESIGNED DRAFT	11.30 m
结构吃水 SCANTLING DRAFT	13.299 m
结构吃水重量 DEADWEIGHT at SCANTLING DRAFT	63212.5 t
船级 CLASSIFICATION	DNV +I+1 Bulk Carrier,ESP,CSR,COAT-PSPC(B)
	BC-A (holds NO.2 & 4 may be empty),GRAB(20),
	EQ,1MON,BIS

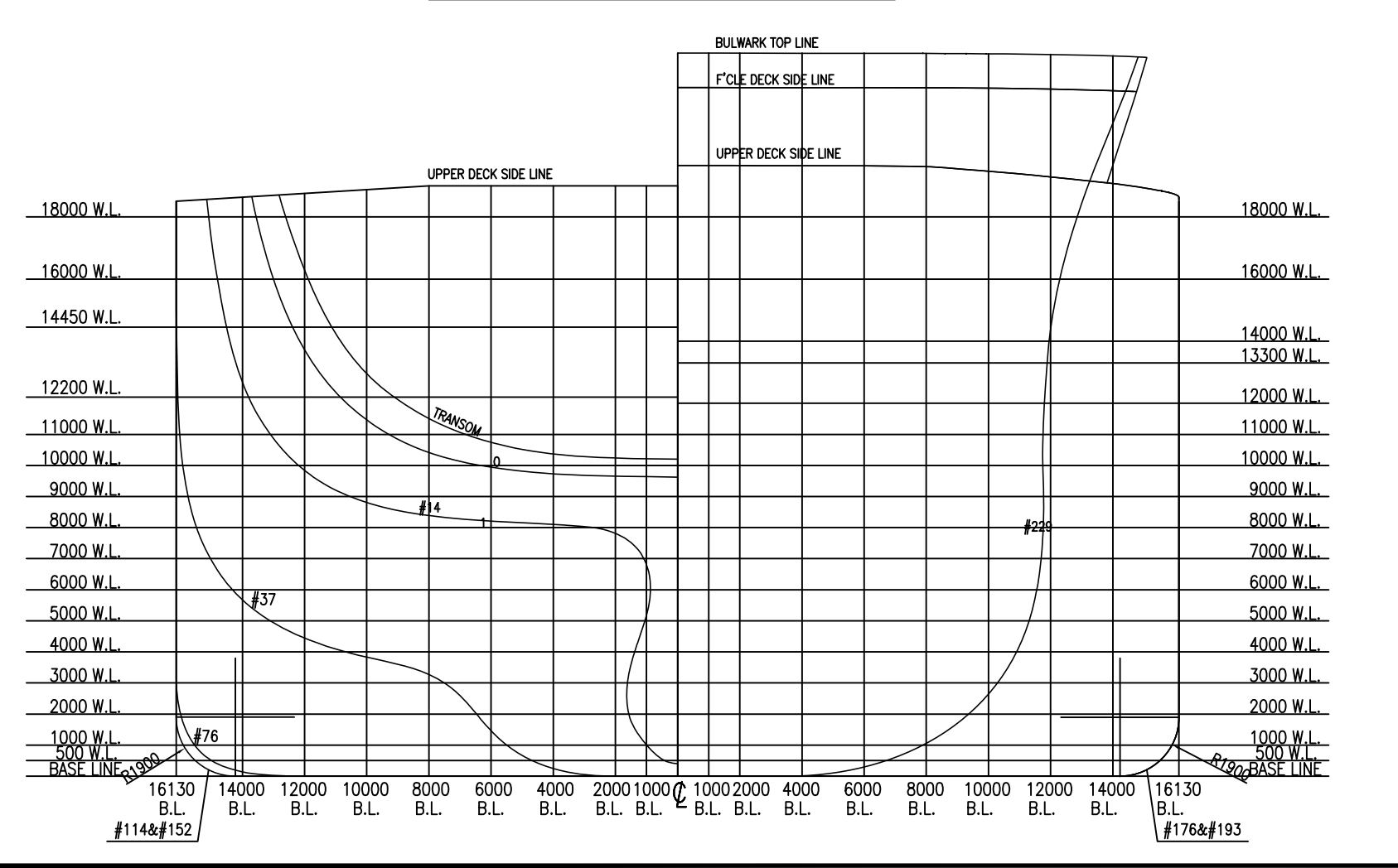


FOR EVERY BLOCK THE ALLOWABLE LOAD IS 4BT.100 TONS.

STEM DETAILS



BULKHEAD SECTION



ITEM	TANK MARK	NAME	POSITION OF PLUG	LOCATION
22	STCWT	COOL W.TK.	F14-300	F7-114
21	STLOD	S/T LO DRAIN TK.	F16-300	F14-F16
20	VOID	COFFERDAM	F31-400	F16-F32
19	LOD	L.O. DRAIN TK.	F29-300	F25-F29
18	OWT	BLEED WATER TK.	F37-300	F29-F37
17	FOD	F.O. DRAIN TK.	F29-300	F25-F29
16	SLT	SLUDGE TK.	F37-300	F29-F37
15	SHT	SEWAGE HOLDING TK.	F29-300	F21-F29
14	FOD	F.O. OVEFR. TK.	F29-300	F21-F29
13	PT	PIPE DUCT	F34-300	F34-F196
12	50WBT.S	NO.5 B.S.W.B.TK.(S)	F37-300	F37-F76
11	48WBT.P	NO.5 B.S.W.B.TK.(P)	F37-300	F37-F76
10	48WBT.S	NO.4 B.S.W.B.TK.(S)	F76-300	F76-F114
9	48WBT.P	NO.4 B.S.W.B.TK.(P)	F76-300	F76-F114
8	38WBT.S	NO.3 B.S.W.B.TK.(S)	F114-300	F114-F152
7	38WBT.P	NO.3 B.S.W.B.TK.(P)	F114-300	F114-F152
6	28WBT.S	NO.2 B.S.W.B.TK.(S)	F152-300	F152-F193
5	28WBT.P	NO.2 B.S.W.B.TK.(P)	F152-300	F152-F193
4	18WBT.P	NO.1 W.B.TK.(P)	F193-300	F193-F229
3	18WBT.S	NO.1 W.B.TK.(S)	F193-300	F193-F229
2	FPT	F.P.TK.	F229-300	F229-FORE
1	FPT	F.P.TK.	F229-300	F229-FORE

ITEM	FRAME NO.	POSITION
HIGH SEA CHEST	#33-#35 S	SHELL TO 6000 FROM B.L.
LOW SEA CHEST	#31-#33 P	2140 TO 4690 FROM B.L.
EMER. SEA CHEST	#229-#230 P	B.L. TO 1780 FROM B.L.
E.S. TRANSDUCER	(#230+374, -972 TO C.L.)	
LOG TRANSDUCER	(#232+200, -972 TO C.L.)	
FWD DRAFT SENSOR INLET	(#232+400, -400 TO C.L.)	
MID DRAFT SENSOR(P) INLET	(#114+400, -16130 TO C.L.,2200 FROM B.L.)	
MID DRAFT SENSOR(S) INLET	(#114+400, -16130 TO C.L.,2200 FROM B.L.)	
AFT DRAFT SENSOR INLET	(#18+400, 200 FROM B.L.)	

DOCKING CONDITION

DISPLACEMENT	11977.75t
LIGHT SHIP	
Crew & Effects	5.8t
Spare	20.0t
Provision	1.9t
Fresh Water	50.78t
Cooling Water	33.12t
Heavy Fuel Oil	193.32t
Diesel Oil	20.29t
Lubricating Oil	108.52t
Miscellaneous	253.99t
NO.1 B.W.B.TK.P. (100% filling)	1663.45t
NO.1 B.W.B.TK.S (100% filling)	1680.76t
Fore Peak Tank (83.1% filling)	1169.83t
DISPLACEMENT	17179.54t
DRAUGHT	
FORE	3.392m
AFT.	3.422m
MEAN	3.407m
IN SEA WATER	
S.G.=1.025t/m ³	

FINAL DRAWING 第三册 63,000DWT PANAMA MAX BULKER WITH TRAINING PURPOSE SC4622(WH)-903-01 HULL NO.:AVIC399

DOCKING PLAN 进坞图

CEYLON PRINCESS

SCALE: 1:200

DATE: 2016.05.31

DESIGNER: [Signature]

CHECKER: [Signature]

APPROVED: [Signature]

DATE: 2016.05.31

SCALE: 1:200

DATE: 2016.05.31

DESIGNER: [Signature]

CHECKER: [Signature]

APPROVED: [Signature]

DATE: 2016.05.31