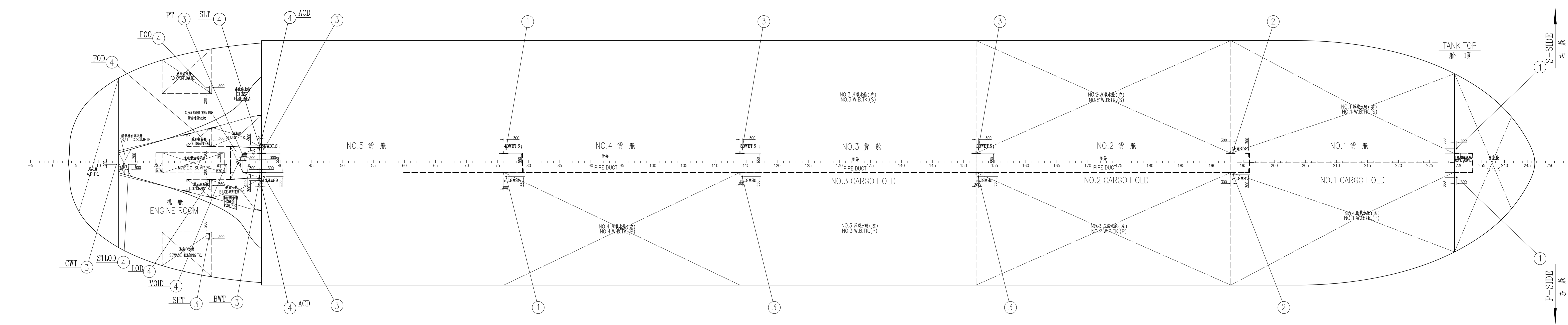
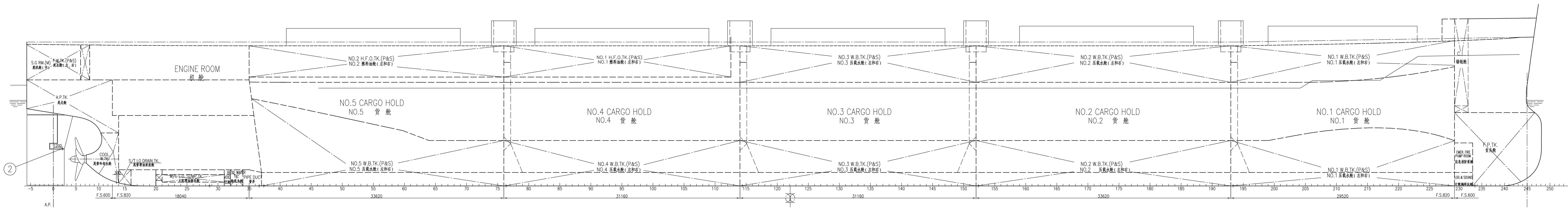
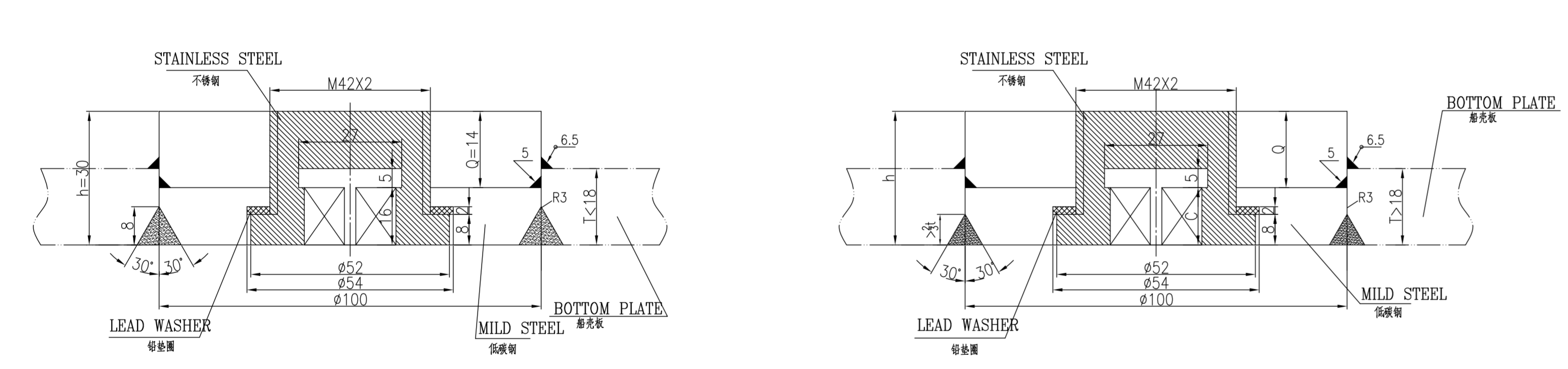


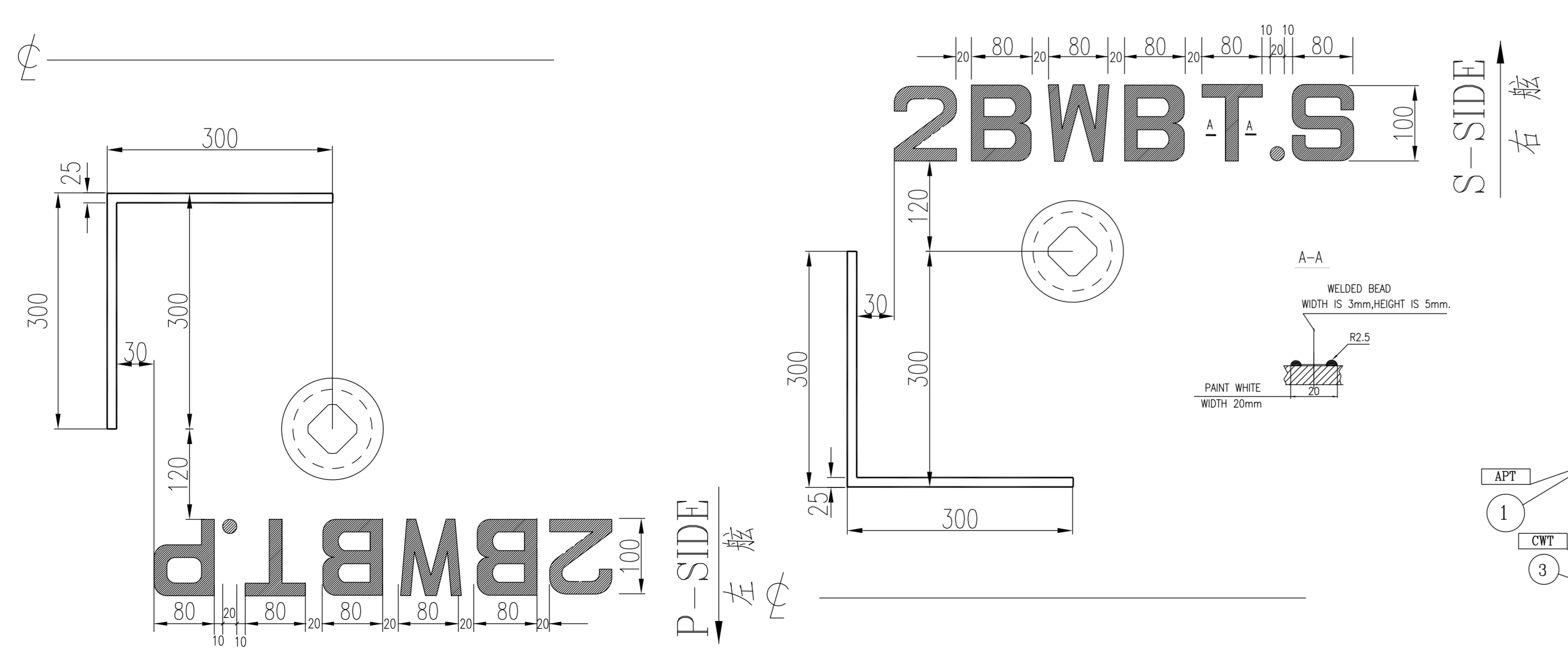
| REV | DESCRIPTION | DATE | BY | CHECKED |
|-----|-------------|------|----|---------|
| | | | | |



TYP.PLAN FOR FITTING BOTTOM PLUG
A型放油塞安装典型节点



LETTERS FOR TANK
舱柜区域字母



| ITEM | TANK MARK | NAME | POSITION OF PLUG | LOCATION | No | THICK OF SHIEL PLATE |
|------|-----------|------------------------|----------------------|------------------------|----|----------------------|
| 26 | RH | RUDDER HORN | F2 | F-1-F150 | 2 | t=30 |
| 25 | APT | A.P.T.K. | F14 ³⁰⁰ | AFT-F14 | 1 | t=17 |
| 24 | STCWT | COOL.W.T.K. | F14 ³⁰⁰ | F7 ¹⁵⁰ -F14 | 3 | t=20 |
| 23 | STLOD | ST/LO DRAIN TK. | F16 ³⁰⁰ | F14-F16 | 4 | t=16.5 |
| 22 | VOID | COWPERSHAM | F31 ²⁵⁰ | F16-F32 | 4 | t=16.5 |
| 21 | LOD | L.O. DRAIN TK. | F29 ³⁰⁰ | F25-F29 | 4 | t=14 |
| 20 | BWT | BILGE WATER TK. | F37 ³⁰⁰ | F29-F37 | 3 | t=14.5 |
| 19 | FOD | F.O. DRAIN TK. | F29 ³⁰⁰ | F25-F29 | 4 | t=14 |
| 18 | SLT | SLUDGE TK. | F37 ³⁰⁰ | F29-F37 | 4 | t=14.5 |
| 17 | ACD | CLEAR WATER DRAIN TANK | F37 ³⁰⁰ | F32-F37 | 4 | t=14.5 |
| 16 | ACD | SEWAGE HOLDING TK. | F37 ³⁰⁰ | F32-F37 | 4 | t=14.5 |
| 15 | SHT | F.O. OVERF. TK. | F29 ³⁰⁰ | F21-F29 | 3 | t=14.5 |
| 14 | FOO | F.O. OVERF. TK. | F29 ³⁰⁰ | F25-F29 | 4 | t=14.5 |
| 13 | PT | PIPE DUCT | F34 ³⁰⁰ | F34-F196 | 3 | t=16.5 |
| 12 | 5BWBT.S | NO.5 B.S.W.B.T.K.(S) | F37 ⁺³⁰⁰ | F37-F76 | 3 | t=14.5 |
| 11 | 5BWBT.P | NO.5 B.S.W.B.T.K.(P) | F37 ⁺³⁰⁰ | F37-F76 | 3 | t=14.5 |
| 10 | 4BWBT.S | NO.4 B.S.W.B.T.K.(S) | F76 ⁺³⁰⁰ | F76-F114 | 1 | t=17 |
| 9 | 4BWBT.P | NO.4 B.S.W.B.T.K.(P) | F76 ⁺³⁰⁰ | F76-F114 | 1 | t=17 |
| 8 | 3BWBT.S | NO.3 B.S.W.B.T.K.(S) | F114 ⁺³⁰⁰ | F114-F152 | 3 | t=17.5 |
| 7 | 3BWBT.P | NO.3 B.S.W.B.T.K.(P) | F114 ⁺³⁰⁰ | F114-F152 | 3 | t=17.5 |
| 6 | 2BWBT.S | NO.2 B.S.W.B.T.K.(S) | F152 ⁺³⁰⁰ | F152-F193 | 3 | t=17.5 |
| 5 | 2BWBT.P | NO.2 B.S.W.B.T.K.(P) | F152 ⁺³⁰⁰ | F152-F193 | 3 | t=17.5 |
| 4 | 1BWBT.S | NO.1 B.S.W.B.T.K.(S) | F193 ⁺³⁰⁰ | F193-F229 | 2 | t=23 |
| 3 | 1BWBT.P | NO.1 B.S.W.B.T.K.(P) | F193 ⁺³⁰⁰ | F193-F229 | 2 | t=23 |
| 2 | FPT | F.P.T.K. | F229 ⁺³⁰⁰ | F229-FORE | 2 | t=23.5 |
| 1 | FPT | F.P.T.K. | F229 ⁺³⁰⁰ | F229-FORE | 2 | t=23.5 |

- NOTE:
- THREE SPANNERS FOR M42X2 CB/T254-1997 SHOULD BE PROVIDED.
 - OUTER PART OF PLUG CONNECTS TO BOTTOM SHELL TO BE WELDED AT THE TWO SIDES.
 - THE PLOGS SHOULD BE ARRANGED AT THE SAME SURFACE OF BOTTOM SHELL, WHICH SHOULD NOT STAND OUT BOTTOM SHELL SURFACE.
 - CHESEL STEEL LETTERS AS TABLE SHOWS ON THE PLOGS, THE WIDTH OF LETTER IS 3mm, THE HEIGHT IS 5mm.
 - THE SIZE OF THE TANK DIVISION LINE AND ITS LETTERS IS SHOWN IN THE DRAWING. THE DIVISION LINE AND LETTERS SHOULD BE WELDED DIRECTLY ON THE OUTER SIDE OF SHELL BY WELDING ROD.
 - THE DISTANCE BETWEEN THE CENTER LINE OF PLUG AND THE SEAM SHOULD MORE THAN 300mm, THE LOCATION OF THE PLUG COULD BE ADJUSTED IN WORKSITE.
 - TANK MARK TO BE PROVIDED NEAR BY THE MARK DIVISION OF LIQUID TANK.

- 注:
- 配备3把M42x2 CB/T254-1997 扳手。
 - 放水塞外壳与船底板连接处，两面均需焊接。
 - 放水塞一般放置与壳板表面平齐，不能高出船体壳板外表面。
 - 放水塞上需加表中所列的字母标志。
 - 船柜分线及字母大小如表所示，用焊条焊出。
 - 船柜中心线距焊缝大于300mm，船柜位置视现场可作调整。
 - 在船底分线标志的附近应焊出柜名标志。

| REP. NO. | REP. CB/T 254-1997 | 数量 | 材料 | 重量 | 备注 |
|----------|--------------------|----|-----|------|-------------|
| 4 | A042-30N | 1 | 不锈钢 | 1.86 | 2 for spare |
| 3 | A042-30N | 10 | 不锈钢 | 18.6 | 2 for spare |
| 2 | A042-45N | 5 | 不锈钢 | 2.39 | 2 for spare |
| 1 | A042-35N | 3 | 不锈钢 | 2.91 | 2 for spare |

DETAIL DESIGN 详细设计

53600MT DWT PANAMAX BULKER WITH TRAINING PURPOSE

SC4622(WH)-309-01

HULL NO. JAVIC398/AVIC399

重量 416kg 数量 1200

设计: SHANGHAI MARITIME DESIGN & RESEARCH INSTITUTE 上海船舶研究设计院

This drawing and the information contained is the exclusive property of SDARI and must not be copied or handed over to third parties without our written permission.